

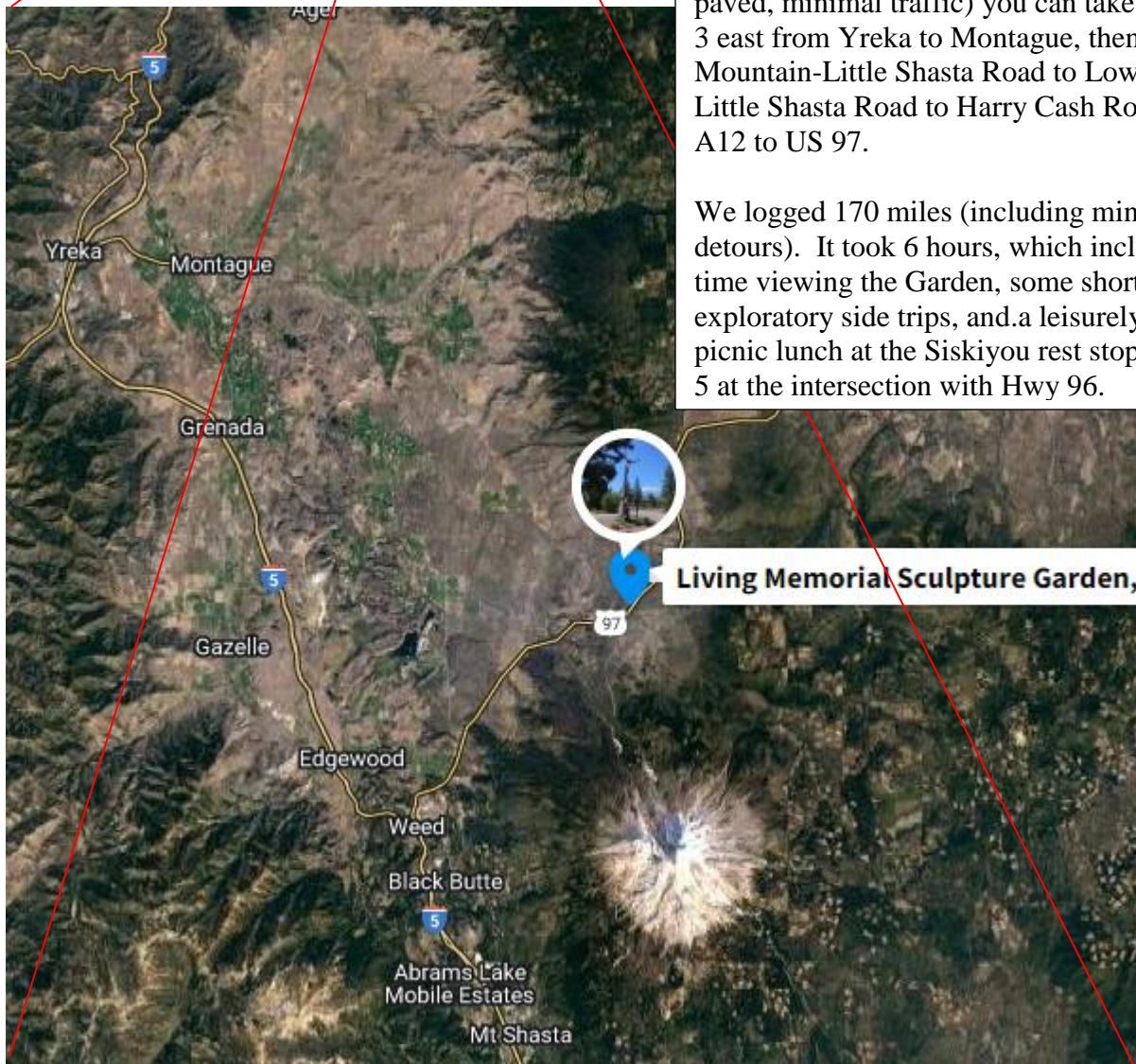
The Living Memorial Sculpture Garden is located on Hwy US 97 in Siskiyou County, Northern California. Coordinates are 41.5424815 N, 122.2316436 W.

From the South, take I-5 to Weed, then US 97 north.

From the North the quickest access is via I-5 to Grenada, then Hwy A12, which connects to Hwy 97 a short distance SW of the Garden.

For enhanced back-country viewing (all paved, minimal traffic) you can take Hwy 3 east from Yreka to Montague, then Ball Mountain-Little Shasta Road to Lower Little Shasta Road to Harry Cash Road to A12 to US 97.

We logged 170 miles (including minor detours). It took 6 hours, which included time viewing the Garden, some short exploratory side trips, and a leisurely picnic lunch at the Siskiyou rest stop on I-5 at the intersection with Hwy 96.



Living Memorial Sculpture Garden,

The Living Memorial Sculpture Garden is located on Hwy US 97 in Siskiyou County, Northern California. Coordinates are 41.5424815 N, 122.2316436 W.

From the South, take I-5 to Weed, then US 97 north.

From the North the quickest access is via I-5 to Grenada, then Hwy A12, which connects to Hwy 97 a short distance SW of the Garden.

For enhanced back-country viewing (all paved, minimal traffic) you can take Hwy 3 east from Yreka to Montague, then Ball Mountain-Little Shasta Road to Lower Little Shasta Road to Harry Cash Road to A12 to US 97.

Our trip logged 170 miles (including minor detours). It took 6 hours, which included time viewing the Garden, some short exploratory side trips, and a leisurely picnic lunch at the Siskiyou rest stop on I-5 at the intersection with Hwy 96